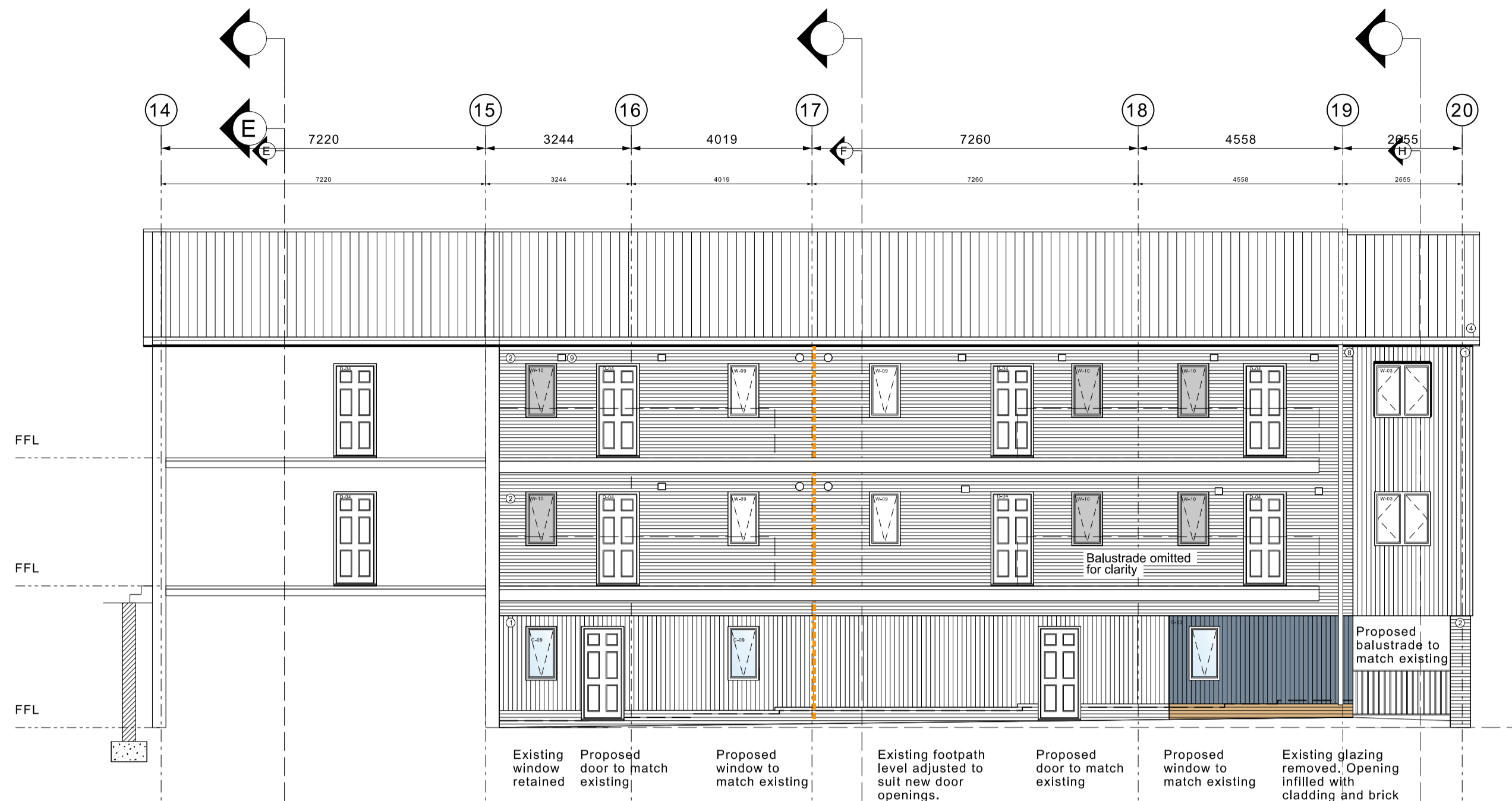




01 Elevation 04 - Proposed
A2806 To be read in conjunction with A2808



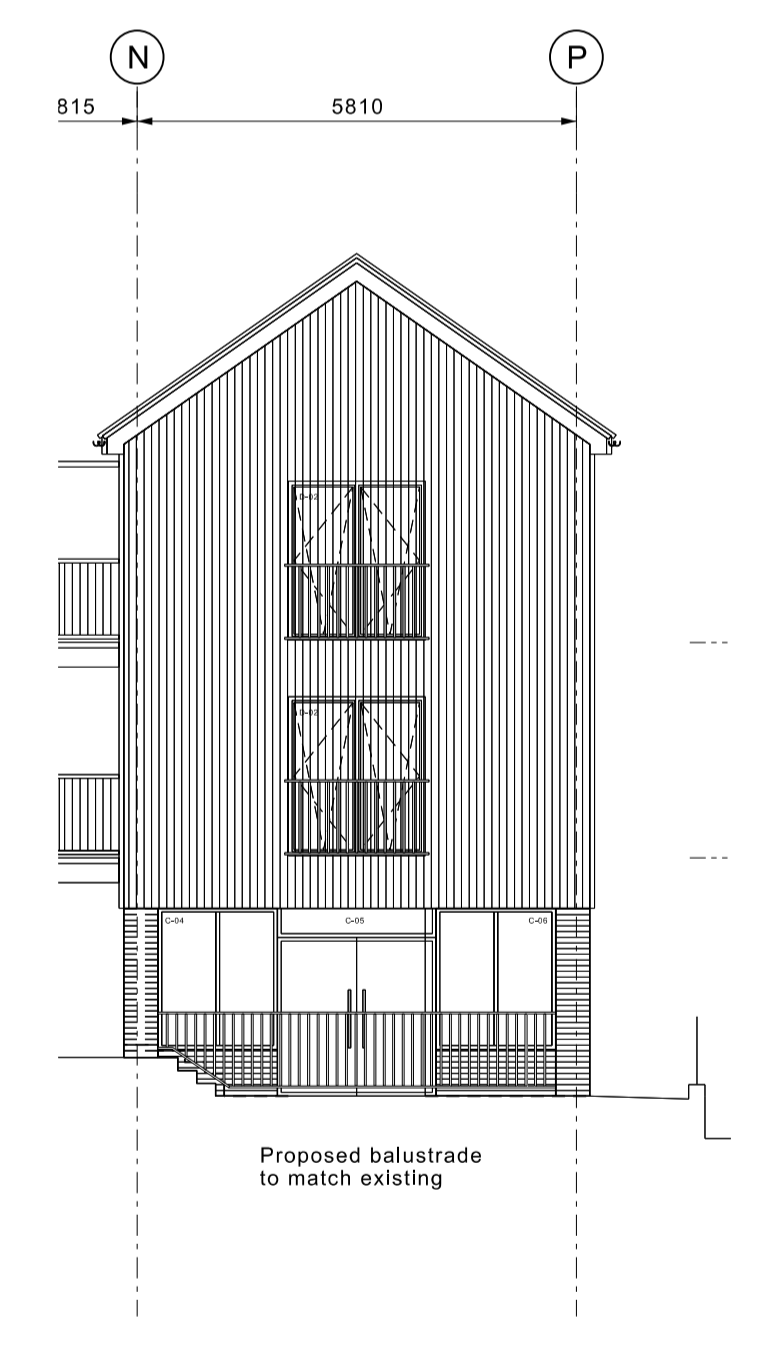
02 Elevation 06 - Proposed
A2806 To be read in conjunction with A2808

KEY TO ELEVATIONS	
1	Pre-finished black timber vertical cladding with a feather edge joint. Requirement for fire resistant coating to timber to be confirmed. Refer also to drawings A1408.
2	Facing brick - Wienerberger New Red Multi Gill Stock
2a	Facing brick slips - Wienerberger New Red Multi Gill Stock
3	Render - Weber.plast TF 150 Vanilla render or similar
4	Roof - Marley Elenti Edgemere concrete interlocking tile (State grey colour) or similar.
5	Build Lite stone look alike heads and cills.
6	PPC metal Juliette balconies (to door type D1) Refer to separate details.
7	Metal balcony to access walkway - colour and finish TBC.
8	Rainwater goods in black UPVC. Locations indicative only. TBC with manufacturer.
9	Extract for mechanical ventilation. Exact size and location to be confirmed by M&E Consultant
	Indicates obscure glazing to bathroom windows. Specification to be confirmed.
	Brickwork Movement Joint - Locations to be confirmed with Structural Engineer
	DPC - stepped as indicated to suit finished external levels

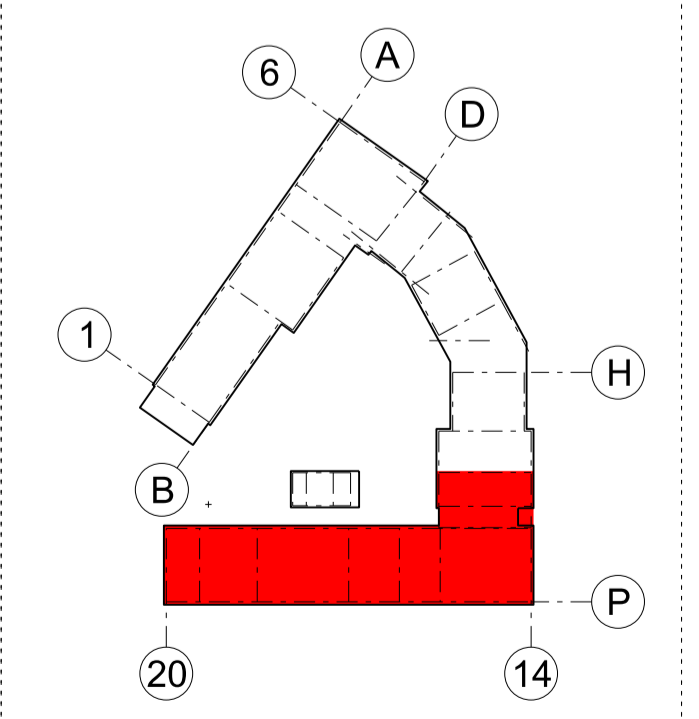
To be read in conjunction with wall type details drawing A2500. Refer to A1408 for window types. Refer to A1407 for door types. Refer to A1008 for external levels and paving types



03 Elevation 08 - Proposed
A2806 To be read in conjunction with A2808



04 Elevation 07 - Proposed
A2806 To be read in conjunction with A2808



Rev	Drawn	Date	Comment
-	SJS	19.09.21	Issued for Client comment / approval
A	SJS	27.09.21	ISSUED FOR PLANNING