



COMMUNITY SAFETY SUB COMMITTEE

WEDNESDAY, 6 APRIL 2022

ADDITIONAL PAPERS

Date published: 1 April 2022

- | | |
|---------------|--|
| Agenda Item 7 | OPERATION DODFORD
(a) To receive an update report from Bedfordshire Police in respect of Operation Dodford, crime and antisocial behaviour for the period January – February 2022 (attached)
(Pages 1-10) |
| Agenda Item 8 | COMMUNITY SAFETY BUDGET

(c) To receive and consider a request for funding towards young people's activities (to follow).
(Pages 11 - 14) |

PLEASE BRING THE ATTACHED PAPERS TO THE MEETING IN ADDITION TO THE PREVIOUSLY CIRCULATED AGENDA.

This page is intentionally left blank



OPERATION DODFORD

Report January 2022 – March 2022

Author - T/PS 5457 Amy FRENCH

No part of this report should be disseminated or copied external to Bedfordshire Police without the prior approval of report owner. This cover sheet should not be detached from the report to which it refers.

Recorded Crime Rates

Year to Date

Crime Type	Crimes Per Day			Recorded Crime		
	01/04/20 to 31/03/21	01/04/21 to 31/03/22	% Change	01/04/20 to 31/03/21	01/04/21 to 31/03/22	Change
Death/Injury by Unlawful Driving	0.00	0.00	n/a	0	1	+1
Violence with Injury	0.57	0.61	+7.2%	209	224	+15
Violence without Injury	0.99	0.89	-10.0%	361	325	-36
Stalking and Harassment	0.77	0.78	+2.1%	280	286	+6
Rape	0.05	0.07	+41.2%	17	24	+7
Other Sexual Offences	0.12	0.11	-6.8%	44	41	-3
Robbery	0.05	0.07	+44.4%	18	26	+8
Burglary - Residential	0.23	0.19	-15.5%	84	71	-13
Burglary - Other	0.18	0.12	-33.3%	66	44	-22
Vehicle Offences	0.46	0.46	+0.0%	168	168	+0
Theft from the Person	0.05	0.04	-22.2%	18	14	-4
Bicycle Theft	0.12	0.08	-31.0%	42	29	-13
Shoplifting	0.61	0.64	+6.3%	221	235	+14
Other Theft	0.48	0.59	+21.6%	176	214	+38
Arson	0.01	0.03	+200.0%	4	12	+8
Criminal Damage	0.62	0.51	-18.0%	228	187	-41
Trafficking of Drugs	0.01	0.04	+250.0%	4	14	+10
Possession of Drugs	0.08	0.05	-40.0%	30	18	-12
Possession of Weapons	0.03	0.03	-8.3%	12	11	-1
Public Order	0.79	0.67	-14.9%	288	245	-43
Miscellaneous Crimes Against Society	0.13	0.19	+54.3%	46	71	+25
Total	6.35	6.19	-2.4%	2316	2260	-56

Area Comparison

Crime Type	Crimes Per Day			Recorded Crime			Solved Crimes			Solved Crime Rate		
	01/04/20 to 31/03/21	01/04/21 to 31/03/22	% Change	01/04/20 to 31/03/21	01/04/21 to 31/03/22	Change	01/04/20 to 31/03/21	01/04/21 to 31/03/22	% Change	01/04/20 to 31/03/21	01/04/21 to 31/03/22	Change
Luton Borough	49.38	51.89	+5.1%	18023	18941	+918	2363	1997	-15.5%	13.1%	10.5%	-2.6%
Central Beds	40.73	41.84	+2.7%	14867	15273	+406	1518	1253	-17.5%	10.2%	8.2%	-2.0%
Bedford Borough	38.52	39.95	+3.7%	14061	14583	+522	1829	1715	-6.2%	13.0%	11.8%	-1.2%
Unknown Location	3.15	3.57	+13.4%	1150	1304	+154	288	242	-16.0%	25.0%	18.6%	-6.5%
Force Total	131.78	137.26	+4.2%	48101	50101	+2000	5998	5207	-13.2%	12.5%	10.4%	-2.1%

Top Crime Locations

01/01/2022 to 31/03/2022

Location	Crimes in Period	Trend	Link
9, Waitrose & Partners Ltd, Waterborne Walk, Leighton Buzzard, LU7 1DH	16		List
Wm Morrison Supermarkets Plc, Lake Street, Leighton Buzzard, LU7 1WS	14		List
Tesco Stores Ltd, Vimy Road, Leighton Buzzard, LU7 1ER	12		List
Vandyke Upper School & Community College, Vandyke Road, Leighton Buzzard, LU7 3DY	7		List
Morrisons Supermarket Plc, Morrison, Filling Station, Lake Street, Leighton Buzzard, LU7 1WS	7		List
29, Peacocks Stores Ltd, High Street, Leighton Buzzard, LU7 1DN	5		List
15, Superdrug Stores Plc, Waterborne Walk, Leighton Buzzard, LU7 1DH	5		List
3-5, Lloyds Pharmacy, Market Square, Leighton Buzzard, LU7 1EU	4		List
109-113, Co-operative Retail Services Ltd, Waterdell, Leighton Buzzard, LU7 3PL	4		List
Nelson Road, Leighton Buzzard, LU7 3EE	4		List
Vandyke Road, Leighton Buzzard, LU7 3HH	4		List
37, Poundland, High Street, Leighton Buzzard, LU7 1DN	4		List
Chelsea Green, Leighton Buzzard, LU7 2PT	4		List
28, Wilko Retail LTD, High Street, Leighton Buzzard, LU7 1EA	4		List
Grovebury Retail Park, Aldi Foodstore Ltd, Unit 1, Grovebury Road, Leighton Buzzard, LU7 4EG	4		List

Anti Social Behaviour January 2022 – March 2022

Response Grade	Incidents Per Day			Incidents		
	01/04/20 to 09/03/21	01/04/21 to 09/03/22	% Change	01/04/20 to 09/03/21	01/04/21 to 09/03/22	Change
Immediate	282.5	199.3	-29.5%	96630	68147	-28483
Priority	0.0	37.4	+141933.3%	9	12783	+12774
Scheduled	13.8	26.0	+89.0%	4706	8892	+4186
Appointment	16.6	15.0	-10.1%	5693	5116	-577
No Response	196.5	195.4	-0.6%	67220	66824	-396
Not Graded	0.0	0.0	0%	1	1	0
Total	509.5	473.0	-7.2%	174259	161763	-12496

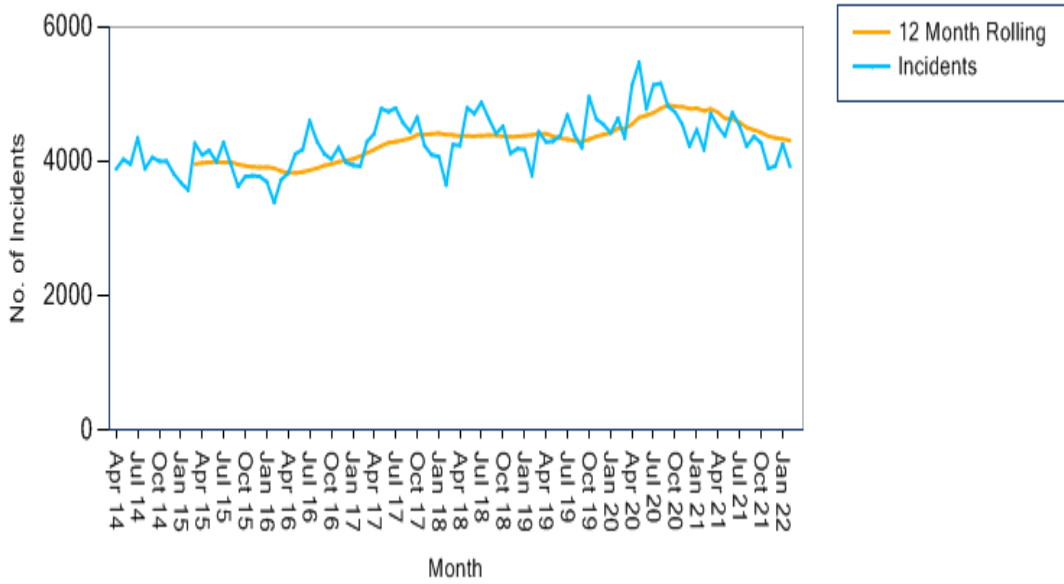
Highest ASB demand locations:

Top Incident Locations in the last 12 months

01/03/2021 to 09/03/2022

Location Name	Incidents in Period	Trend	Location History
ASTRAL PARK, JOHNSON DR, LEIGHTON BUZZARD, LU7 4AY	40		List
MEADOW WAY, LEIGHTON BUZZARD, LU7 3XL	25		List
24, CEDARS WAY, LINSLADE, LU7 2PD	23		List
12, ST MARYS WAY, LINSLADE, LU7 2RX	21		List
STANBRIDGE RD, LEIGHTON BUZZARD, LU7 1RX	14		List
VANDYKE RD, LEIGHTON BUZZARD, LU7 3HH	13		List
32, VIMY RD, LINSLADE, LU7 1FQ	11		List
APPENINE WAY, LEIGHTON BUZZARD, LU7 3LJ	11		List
HIGH ST, LEIGHTON BUZZARD, LU7 1EX	10		List
BILLINGTON RD, LEIGHTON BUZZARD, LU7 1RX	10		List
VIMY RD, LINSLADE, LU7 1LA	9		List
WATERBORNE WK, LEIGHTON BUZZARD, LU7 1DT	9		List

ASB Long Term Trend



Incidents

Financial Year	Apr	May	Jun	Jul	Aug	Sep	Oct	Nov	Dec	Jan	Feb	Mar	Total	Avg
Financial Year: 2021/2022	4522	4383	4729	4539	4228	4376	4281	3899	3936	4262	3931		47086	4280.00
Financial Year: 2020/2021	5138	5478	4784	5140	5164	4823	4737	4552	4225	4480	4177	4719	57417	4784.00
Financial Year: 2019/2020	4295	4304	4388	4695	4392	4208	4967	4635	4554	4428	4646	4350	53862	4488.00
Financial Year: 2018/2019	4242	4802	4714	4883	4642	4418	4530	4125	4193	4179	3794	4447	52969	4414.00
Financial Year: 2017/2018	4414	4789	4743	4799	4581	4448	4663	4240	4103	4075	3652	4251	52758	4396.00
Financial Year: 2016/2017	3831	4115	4180	4608	4302	4117	4037	4213	3989	3949	3932	4295	49568	4130.00
Financial Year: 2015/2016	4099	4167	3996	4286	3963	3630	3778	3791	3782	3701	3391	3728	46312	3859.00
Financial Year: 2014/2015	3893	4034	3965	4356	3895	4063	4008	4010	3822	3686	3577	4274	47583	3965.00

Dodford Results

Current tasking is weekly market day patrols on Tuesday and Saturdays (single PC or PCSO 09:00 – 17:00 to disrupt and detect anti-social behaviour.

Market day patrol intention

- Provide high visibility policing in the town centre and Market.
- Patrol the shops.
- Make licensed premises checks in the town centre.
- Monitor the taxi ranks, and deal with any offences.
- To seize alcohol and cigarettes from minors and alcohol in designated areas.
- Stop check younger children and enquire as to truancy.
- To ensure that the shoppers who come to the town centre and shop keepers and their staff feel safe whilst going about their business whilst deterring shoplifting in the retail establishments.
- To deter and move on street drinkers within the town centre area.
- To challenge and document antisocial behaviour and parking.
- To visit and patrol Parsons Rec & Pages Park to deter/ detect antisocial behaviour.
- To assist with encouraging social distancing and help to ensure the current COVID guidance is adhered to and enforced.

Total hours worked and outcomes

Month	Hours worked	Footbeat (hours)	Incidents Attended / of note	People stopped	Vehicles Stopped	Arrests
January 2022	64	55	Assistance from officer to a community event that was being held in the town centre. Warnings issued to youths causing issues at the top of the multi storey car park in WEST STREET. Regular beggars seen in their usual spots. Enforcement action already in progress for these males and waiting for court dates. Traveller females removed from Wilkinson's after officer believed attempting shoplifting. Vehicles stopped going the wrong way down LAKE STREET and made to turn round. Vehicles moved on from double yellow lines in NORTH STREET.	10+	1	0

			<p>CCTV reviewed at various stores to try and identify shoplifting offenders,</p> <p>Male and female shoplifters still targeting Boots and Lloyds Pharmacy. Injunction file for court has been submitted and now just waiting for a date.</p> <p>Female Romanian beggar seen begging in the alleyway by Peacocks. Moved on and strong words of advice given.</p> <p>Visit to Sun Trap in WATERBORNE WALK after intelligence that they are allowing underage girls to use equipment as you must be over 18. A final warning was issued and now this will be reported to Trading Standards.</p> <p>Known burglar just released from prison seen walking in the HIGH STREET. Run through PNC but not wanted at this time. Observed until left town of own accord.</p> <p>Theft of a pressure washer from Wilkinson's. Attended store immediately but offender had already left. CCTV viewed and male not known but advised to report to Crime Recording.</p> <p>Known prolific shoplifter seen sitting outside NatWest Bank in the HIGH STREET. Waiting for court date.</p> <p>Street Watch regularly seen and spoken to and intelligence shared on who has been in town and who to look for.</p> <p>Kids on E-Scooters and bikes causing issues to members of the public. Advice given and moved on.</p> <p>88-year-old male fallen over in the HIGH STREET. Ambulance called and taken to hospital.</p> <p>Male causing issues at the library and removed.</p> <p>GROVEBURY ROAD retail park checked numerous times.</p> <p>6 X intelligence reports submitted.</p>			
February 2022	64	55	<p>Prolific male shoplifter named as being responsible for targeted thefts in the HIGH STREET and WATERBORNE WALK. Statements obtained and injunction file has been submitted. Later in the month this male was given a custodial prison sentence where he is still residing. Injunction still live and waiting for court date upon his release.</p> <p>Known older male beggar hanging around by Lloyds Pharmacy with a coffee cup in front of him. Another known male thought to be an associate also seen in the area. Thought to be drug dealing. CCTV contacted to monitor. Later older male removed from the town centre and a breach of Community protection Warning was completed.</p> <p>Possible sighting of a known male shoplifter just released from prison in the HIGH STREET. Nothing confirmed at this time and CCTV made aware and to monitor.</p> <p>Prolific shoplifter recently moved back to the town spotted with his new girlfriend. Statement to be completed for breach of criminal behaviour Order.</p>	10+	2	0

			<p>Male and female prolific shoplifters seen walking up the HIGH STREET towards the Market Cross. Officer followed both and made sure they left the town which they did. Injunction file has been submitted for both and just waiting for a court date.</p> <p>Male recently released from prison for armed robbery spotted in the HIGH STREET and spoken with. Male and officer are known to each other, so intelligence gathered and submitted.</p> <p>Street Watch engaged with many times and intelligence shared on who is in town and who to look out for.</p> <p>Known street drinker seen in the HIGH STREET. No alcohol on him this time.</p> <p>Youths being a nuisance by Waitrose in WATERBORNE WALK. Officer called for assistance which arrived, and the youths quickly left the area.</p> <p>Youths causing problems in PARSONS REC. Moved on.</p> <p>Vehicles still driving the wrong way down LAKE STREET. Stopped and advice given.</p> <p>Officer assisted with a traffic accident in GROVEBURY ROAD.</p> <p>Collapsed female at The Picture House in LAKE STREET. Officer attended and assisted.</p> <p>Assist with 2 school children who had absconded from oak bank school and thought to have made their way to the town centre.</p> <p>CCTV collected from shoplifting incidents within the town and booked into property to be reviewed.</p> <p>New Look reporting that they have been having issues with traveller females attempting to steal clothes. Advice and reassurance given.</p>			
March 2022	72 (As per booked shifts)	Unavailable at this time.	<p>Intelligence submitted in relation to drug dealing at LECH HOUSE in LAKE STREET.</p> <p>More complaints from Lloyds Pharmacy regarding prolific shoplifter who keeps breaking and stealing fragrances from the glass cabinets. Security advice and reassurance given. Lloyds in the past have been advised to ask head office for a security guard for a few weeks to deter shoplifting.</p> <p>A group from a new church at POTTERS HOUSE outside W H SMITH very loud preaching. Asked by local traders to ask them to keep the noise down so advice given. Have not been back since.</p> <p>2 X children missing in the town but were found safe at home.</p> <p>Officer assisted with road closures after a fatal Road Traffic Collision just outside of the town.</p> <p>Prolific shoplifter identified after CCTV viewed from an attempt theft at Waitrose.</p>	0	0	0

		<p>Young lad stole a track suit from Peacocks but when came face to face with the officer was told to take the items back which he did. The 2 females that were with him reprimanded him and told him never to do it again.</p> <p>Traveller females causing ussies in Poundland by throwing stock around and being a general nuisance. Females were ejected from the shop by the officer and told they were barred. They then went to Peacocks were again they started to cause problems until the officer intervned again and ejected the girls. They then left the town centre.</p> <p>Concern for welfare job called in for one of the local street drinkers found collapsed. Officer stayed until ambulance arrived and casualty was relayed to hospital.</p> <p>Member of the public had parked their car in the Police Bay at the bottom of the HIGH STREET. Officer stayed for owner to return and offered strong words of advice to owner.</p> <p>Prolific shoplifting couple seen walking up the HIGH STREET. Officer followed until they walked out of town. No doubt they would have stolen from various shops if officer had not seen them.</p> <p>Street Watch spoken to, and information shared.</p> <p>Multi Storey car park visited numerous times after reports of anti-social behaviour by local youths.</p> <p>Shops saying they are feeling a lot safer now that a prolific and violent shoplifter has received a custodial sentence.</p>			
--	--	--	--	--	--

Additional information

The shoplifting in the town has been more prevalent recently with prolific offenders targeting stores and thought to be stealing to demand. This is being investigated and the Priority Anti-Social Behaviour team have been working very closely with Central BEDFORDSHIRE Anti-Social behaviour team and CCTV to safeguard evidence to take robust enforcement against those responsible. Much of this has been completed and are waiting for court dates. Dodford officers are aware of who these people are and have been asked to make them a priority while walking around the town. One prolific offender has been taken to court relating to this very recently and has received a Criminal Behaviour Order not to enter LEIGHTON BUZZARD town centre for 2 years. With summer fast approaching officers will also be asked to pay more attention to the local parks and beauty spots to ensure any anti-social behaviour is averted.

Please accept apologies that the March figures and incidents are not fully updated as the report was completed before the end of the month. Any additional figures or incidents can be passed on if requested.

This page is intentionally left blank



GROUNDWORK EAST

Leighton Buzzard Bi-weekly Youth Club

Groundwork East

Groundwork is a federation of charities working nationally and locally to transform lives in the UK's most disadvantaged communities. We're passionate about creating a future where every neighbourhood is vibrant and green, every community is strong and able to shape its own destiny and no-one is held back by their background or circumstances. We help people gain confidence and skills, get into training and work, protect and improve green spaces, lead more active lives and overcome significant challenges such as poverty, isolation, low skills and poor health.

Project Background

Over the last two years and in response to Covid-19, Groundwork East adapted youth work delivery to navigate the various lockdowns and restrictions ensuring young people in Leighton Buzzard received support. This included online sessions, outdoor activities, youth club sessions and hot food. For some, this time was a challenging ordeal as they faced domestic abuse, financial worries and parental substance misuse. Many found the experience to be isolating, confusing and scary. This had a huge impact on the mental health of young people, causing increased anxiety, feelings of depression and suicidal thoughts. The area also saw an increase in youth led ASB and arson, with many vulnerable young people taking to the streets with minimal supervision or guidance.

Groundwork responded quickly with online support and returned to outdoor face to face engagement as soon as possible. Through Central Bedfordshire Council's Youth Provision Contract and with additional funding from Leighton Linslade Town Council and Cllr Victoria Harvey's Covid-19 ward grant scheme, Groundwork were able to host a series of summer events once a week at Astral Park and a 6 month, bi-weekly youth club focusing on the key concerns young people experienced as a result of Covid-19. With support from Police and local organisations, the delivery was a huge success, with some of the most vulnerable young people and families taking part and receiving much needed support. Feedback from those involved demonstrated that all activities helped reduce feelings of isolation, improved mental well-being and helped build positive relationships between families, the police and professionals. During the sessions, the police also confirmed a reduction in incidents of arson, ASB and complaints made by local residents.



Leighton Buzzard Bi weekly youth club

Despite the fact that restrictions have been removed and youth work delivery slowly returns to normal, youth provision is needed more than ever to help support young people over the impact of the last two years. Positive, free activities for young people after school and in the holidays, helps tackle mental ill-health, promote positive well-being, ensure young people are physically active, are able to safely spend time with peers and are provided with hot meals. Activities also reduce the risk of involvement in county lines and CSE (child sexual exploitation), by providing a safe space for young people access support from specialist agencies.

As part of the Central Bedfordshire youth provision contract, Groundwork currently provides the following:

- A weekly open access youth club (Tuesday)
- A bi-weekly LGBTQ+ group (Wednesday)
- A bi-weekly happy and healthy hub evening (Thursday)

Groundwork request funding to provide an additional bi-weekly session on a Thursday to compliment the delivery outlined above, between May and October (12 sessions). Groundwork will continue to work with the police and professionals to target the most vulnerable to engage in the sessions. Activities will include the following:

- Mindfulness and wellbeing support including managing anxiety and stress
- Engaging in education and understanding Information (News and social media)
- Physical and creative activities including football skills, art and crafts and drama
- Hot food
- Specialist services providing information and guidance in areas such as CSE, domestic abuse and gangs and knife crime.

Each session will last 2 hours and support 20/30 young people (covid-19 restrictions dependent).



Outcomes

As a result of the sessions we expect to see the following outcomes:

- Increase in mental well-being
- Increase in confidence and communication
- Increased engagement at school
- Reduced ASB

Groundwork will assess these outcomes through evaluation forms, feedback from young people, professionals, schools and statistics from the police. At the end of each quarter, Groundwork will provide a short narrative report on the project, alongside basic statistical data and 1 case study.

Cost of the programme

6 months of delivery (12 sessions) between May and October

Activity	Cost
Staff Time	
Planning	£1584
Delivery	£3192
Reporting and Meetings (2 reports and attendance at 2 meetings)	£828
Management and marketing	£500
Capital Costs	
Mileage	£225
Resources (session equipment and food)	£180
Total	£6509

Plus, VAT at the prevailing rate.

For more information please contact:

Diana Hedley
Youth Manager
Diana.hedley@groundwork.org.uk
07736 132295



This page is intentionally left blank